



The Check Is in the Mail

March 2008

DAN PERRY EARNS IM TITLE



Dan Perry was born 24 January 1951. He learned the moves when he was around eight or nine. Dan admits that the best he ever achieved OTB was champion of his high school and a few small class prizes. He was more into chess organization and served in various offices of state and local clubs including a couple of years as editor of the Southern Arizona Woodpusher. He has coached at the elementary and junior high level and achieved Associate

National Tournament Director through arranging and directing tournaments in Arizona.

In the late Seventies Dan turned to postal chess, peaking in the APCT with a rating in the high expert range. Then he discovered ICCF and computer aided analysis.

Dan soon learned that he was a much better researcher than chess player. With the advent of the ICCF webserver chess, he was able to eliminate nearly all clerical errors. Daniel was awarded the IM title in 2007 and has earned two SIM norms, but needs a third norm for the title. Dan has recently returned to chess organization taking over as ICCF/US webmaster and ICCF NAPZ Deputy Director.

GAME OF THE MONTH

Dan chose this game as a clear example of choosing a strategic plan to exploit a weakness that without the strategy would have turned out to be a strength.

DUTCH DEFENSE (A88)

White: SM Soren Peschardt (2430)

Black: IM Dan Perry (2417)

ICCF Interzonal 2006

Notes by Dan Perry

1.d4 f5

The Dutch has long been my weapon to keep games in strategies that I may know better than my opponent.

**2.g3 Nf6 3.Bg2 g6 4.Nf3 Bg7 5.0-0 0-0
6.c4 d6 7.Nc3 c6 8.b3 Qa5 9.Bd2 Qc7
10.Qc1**

My opponent takes us out of book first.

10...e5

...e5 usually equalizes in the Dutch and it always feels like a small victory

11.dxe5 dxe5 12.Bh6

The point of Qc1, remove Black's dark square B and try to exploit the dark square weakness.

12...e4 13.Nd4 Ng4

The last two moves are aimed at getting a space advantage and play on the long diagonal.

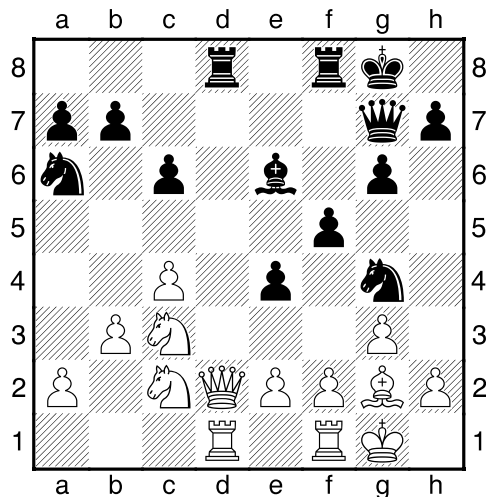
14.Bxg7 Qxg7 15.Qd2

Preparing to dominate the Q file

15...Na6 16.Nc2 Be6

The awkward development on the Q side is a price of playing the Dutch, but I need to clear the back rank quickly to contend on the Q file.

17.Rad1 Rad8!



This looks like a mistake, giving 2Rs for the Q and allowing control of the Q file with a R battery. But the R battery is actually a weakness as I direct my play against the forward R and trap it.

18.Qxd8 Rxd8 19.Rxd8+ Kf7 20.Na4 Qe5 21.Rfd1

21.Nd4 Nf6 22.Nxe6 Kxe6 23.Rfd1 was the last chance to extricate the R

21...Qc7

The two Q moves set up the net. Neither is the first choice of my analysis engines, but they follow from the strategic plan.

22.f3 Nf6 23.fxe4 Bd7

And the minor pieces cut off the R..

24.Ra8 b5 25.Nb2 fxe4 26.Nd4 Nb8 0-1

2008 ABSOLUTE STARTED

Thirteen of our strongest CC players have started play in the 2008 Absolute tournament. In rating order they are SM Gino Figlio (2444) IM Wesley Brandhorst (2416) Ciaran O'Hare (2410) Walter Brower (2375) IM Keith Rodriguez (2373) Hugo Concha (2355) Gordon Everitt (2332) IM Corky Schakel (2322) Laurence Anderson (2284) James Rhodes (2281) Sanford Greene (2280) Danny Horwitz (2233) and Joe Shipman (2209). With an average rating of 2331 this should be an interesting event.

WORLD CHAMPIONSHIP CANDIDATES

Three American players will be playing in the ICCF World Championship Finals starting in the next few months. They are Jon Ostriker, David Myers, and Tim Murray. Good skill, gentlemen !

JOHN MENKE WINS CCLA EMAIL

John Menke has won the 2005 CCLA email championship with 9 ½ - ½, finishing a half point ahead of Cesar Musitani. Third place went to Glen Shields at 8-2.

TIE IN 2005 ABSOLUTE

With a strong finish, IM William Boucher has tied IM Keith Rodriguez for the lead in the 2005 Absolute Tournament. There are still three games to finish in the tournament, but no one else can equal their scores. More news later. Congratulations, gentlemen !

OBITUARIES:

William F. Gray, Jr.

William Gray died on 3 January 2008 at the Walter Reed Hospital in Maryland. Walter was a strong Master and frequent participant in the USCF Absolute Championship (he played in Absolutes 2003-4-5-6-7). Ranked 26th on the February rating list, William was an improving player. He finished first in the 1987 Hawver Cup and a tie for third and fourth in the 2004 Absolute.

ENGLISH OPENING (A25)

White: William Gray (2331)

Black: Michael Calogridis (2321)

2004 Absolute Championship

1.c4 e5 2.Nc3 Nc6 3.g3 g6 4.Bg2 Bg7
5.d3 d6 6.Rb1 f5 7.e3 Nf6 8.Nge2 0-0
9.0-0 a5 10.b3 Ne7 11.d4 e4 12.f3 exf3
13.Bxf3 c6 14.Qd3 g5 15.Ba3 Be6 16.d5
cxd5 17.Nd4 Bf7 18.Ndb5 Ra6 19.Bg2
Qd7 20.cxd5 Ng4 21.Nd4 Be5 22.Rbc1
f4 23.Ne4 Nxe3 24.Nf3 Qf5 25.Nxe5
Qxe5 26.Rf2 N7xd5 27.Bb2 Qf5 28.gxf4
gxf4 29.Nf6+ Nxf6 30.Qxe3 Nd5
31.Qd4 Qe5 32.Qd2 Qf5 33.Bh3 Qe4
34.Re1 Ne3 35.Qc3 Qe5 36.Rg2+ 1-0

Irving Ellner 1918-2008

Irving Ellner died 31 January 2008. He was a strong postal player, and at age 90 was one game away from qualifying for the 2006 Golden Knights semifinals. That last game was unfinished by Irving. He would have done well.

At 90 Irving played a mean game. At 80 he was even tougher. Here he takes the scalp of the very underrated John Knudsen in the US Championship.



QUEEN'S INDIAN DEFENSE (E18)

White: Irving Ellner (2080)

Black: John Knudsen (1994)

13th USCCC 1997

1.d4 e6 2.c4 Nf6 3.Nf3 b6 4.g3 Bb7
5.Bg2 Be7 6.0-0 0-0 7.Nc3 d5 8.Nd2
Nbd7 9.e4 dxe4 10.Ndxe4 Nxe4
11.Nxe4 Rb8 12.Be3 Nf6 13.f3 Qd7
14.Qc2 Rfd8 15.Rad1 Qe8 16.Rd2 Nxe4
17.fxe4 c5 18.d5 exd5 19.exd5 Bd6
20.Re2 Qf8 21.Ref2 f6 22.Be4 Re8
23.Bxh7+ Kh8 24.Bf4 Rbd8 25.Bg6
Bxf4 26.Rxf4 Re5 27.Qg2 Bc8 28.g4 1-0

George Krauss, Jr. 1931-2008



George was born on 14 April 1931 and died 2 February 2008. He was the 1973 Golden Knights co-champion, arguably the strongest Golden Knights championship ever.. A Master level player, George was also an OTB player, playing in 40 US Opens and winning 7 state titles.

In the following game he neatly handles future 1992 Absolute champion Louis Owen and exchanges down into a winning King and Pawn endgame. Ratings are adjusted to the ELO system.

CENTER GAME (C22)

White: Louis Owen (2278)

Black: George Krauss (2336)

USA Corr. 1982

1.e4 e5 2.d4 exd4 3.Qxd4 Nc6 4.Qe3
Bb4+ 5.c3 Be7 6.Bc4 Nf6 7.Nf3 d5
8.exd5 Nxd5 9.Qe2 Be6 10.0-0 Qd6
11.Ng5 0-0-0 12.Nxe6 Qxe6 13.Qxe6+
fxe6 14.Re1 Bc5 15.Nd2 Rdf8 16.Ne4
Bb6 17.Bd2 Ne5 18.Bf1 Ng4 19.Re2
Nf4 20.Bxf4 Rxf4 21.g3 Rf5 22.Bh3 h5
23.Kg2 Rhf8 24.b4 Kb8 25.a4 a5
26.Bxg4 hxg4 27.b5 Kc8 28.Rd1 Rd8
29.Rxd8+ Kxd8 30.Nd2 Bc5 31.Nf1
Ke7 32.Ne3 Re5 33.Kf1 Bxe3 34.Rxe3
Rxe3 35.fxe3 Kd6 36.Ke2 c6 37.bxc6
Kxc6 0-1

DELEHANTY & PERONE TIE 06C0

Delehanty	2217	==	==	1=	01	3½2½
MacNeal	2156	==	=0	=0	=0	2-4
Fairbairn	2112	0=	=1	==	==	3-3
Perone	2003	10	=1	==	==	3½2½

AUSTRIAN ATTACK (B09)

White: Michael Perone (2003)

Black: Steve Fairbairn (2112)

2006 John Collins

1.e4 d6 2.d4 Nf6 3.Nc3 g6 4.f4 Bg7
5.Nf3 0-0 6.Be3 Nc6 7.e5 dxe5 8.dxe5
Qxd1+ 9.Rxd1 Ng4 10.Bg1 f6 11.Bc4+
Kh8 12.h3 Nh6 13.exf6 exf6 14.Nd5
Be6 15.Bc5 Rfe8 16.0-0 Na5 17.Bb3
Nxb3 18.axb3 b6 19.Bb4 Bxd5 20.Rxd5
Rad8 21.Rfd1 Nf7 22.Rd7 Kg8 23.Kf2
c5 24.Bc3 Kf8 25.b4 cxb4 26.Bxb4+
Kg8 27.f5 Bf8 28.fxg6 hxg6 29.Bxf8
Kxf8 30.Nh4 Kg7 31.Rxd8 Rxd8
32.Rxd8 Nxd8 33.Ke3 Nc6 34.Nf3 f5
35.c3 Kf6 ½-½

Quote: Good postal players never make notation errors – Jonathan Berry

TOURNAMENT RESULTS

Walter Muir

Robert Beavan	07W52	6-0
William Krenovsky	06W16	5-1
Wilbur Tseng	07W12	6-0
Michael Wingo	07W46	6-0
Harmony Mosby	07W44	5 ½-½

John Collins

Charles Truax	06C31	5-1
Allen Herridge	06C16	4-2
John Flanagan	05C40	6-0
Thomas Delehanty	06C02	3½-2½
Michael Perone	06C02	3½-2½
Ronald Hopper	07C30	6-0

Swift Quad

Bruce Davis	07SQ04	6-0
Wilbur Tseng	07SQ05	5-1

Trophy Quad

John Buhalo	06Q04	4½-1½
Joseph Daudish	07Q04	5-1
Richard Hayes	07Q09	6-0
Ray Grinsteinner	05QB21	5-1
Daniel Salazar	05QB21	5-1

EXPRESS TOURNAMENT

Wilbur Tseng	07ET06	6-0
--------------	--------	-----

PENTAD TOURNAMENT

Allan Ong	05PEN01	5 ½-2 ½
Robert Oresick	05PEN01	5 ½ 2 ½

US WOMEN VS. GERMANY

A friendly match pitting five US women players against five German women players is underway. The US Team in Board order is represented by 1. Jean Moeckel 2. Roselie Estey 3. Vanessa Glover 4. Janet Peterson and 5. Madge Smith. Good skill, ladies !

TOP 10 USCF CC PLAYERS

1. John Burton	2492
2. Wesley Brandhorst	2482
3. Donald Cotton	2466
4. Doug Walls	2462
5. Christopher O'Connell	2452
6. Chuck Cullum	2450
7. Edward Duliba	2446
8. John Menke	2439
9-10. Gino Figlio	2434
Richard Title	2434

CLASSIFIED ADS

LEARN CHESS BY MAIL ! Lessons given by mail, telephone, ICC – many different ways. I specialize in players rated 800-2100 who would like to improve their game. Contact me for information. Alex Dunne, 324 West Lockhart St., Sayre, PA 18840 or chesskinetics@stny.rr.com

Walter Brower leads 2006 absolute

Finishing play with an undefeated 8-4 score, Walter will be tough to catch in the 2006 Absolute. Theoretically a couple players can catch or surpass him, so it is premature to say congratulations, but it looks like it will be Walter for 2006!

Masters have to know how and when to attack. Grandmasters have to know how to defend. GM Jason Bokar holds off a vicious one.

GRUNFELD DEFENSE (D91)

GM Krzysztof Wiacek (2528)

GM Jason Bokar (2571)

15 Olympiad 2006

1.d4 Nf6 2.c4 g6 3.Nc3 d5 4.Nf3 Bg7
5.Bg5 Ne4 6.cxd5 Nxc5 7.Nxc5 e6
8.Qd2 exd5 9.Qe3+ Kf8 10.Qf4 Bf6
11.h4 h6 12.Nf3 Kg7 13.0-0-0 Be6
14.g4 c5 15.e4 cxd4 16.Nxd4 Bxd4
17.Rxd4 Nc6 18.Rxd5 Bxd5 19.exd5
Nb8 20.Rh3 Qf6 21.Qd2 Nd7 22.f4 Qb6
23.Rg3 Rad8 24.h5 gxh5 25.Na4 Qc7+
26.Kb1 Nf6 27.g5 hxg5 28.Rxg5+ Kf8
29.Qd4 Rh6 30.a3 h4 31.Bh3 b6 32.b4
Rg6 33.Nc3 Rxg5 34.fxg5 Ng8 35.g6 f6
36.Bf5 Qe5 37.g7+ Kxg7 38.Qg4+ Kf8
39.Be6 Qg3 40.Qh5 Kg7 41.Qf7+ Kh6
42.Bf5 Qg7 0-1

Here's one of those full-blooded games that makes CC students stand up and cheer,

SCOTCH FOUR KNIGHTS (C47)

White: William Turin (2102)

Black: Eric Fischvogt (2335)

2005 Electronic Knights

1.e4 e5 2.Nf3 Nc6 3.Nc3 Nf6 4.d4 exd4
5.Nxd4 Bb4 6.Nxc6 bxc6 7.Bd3 d5 8.exd5
cxd5 9.Qe2+ Be7 10.0-0 0-0 11.Re1 Be6
12.Bf4 c5 13.Rad1 Qb6 14.b3 Rad8 15.a3
Bd6 16.Qd2 Rfe8 17.Bg5 Be7 18.Bb5 Ne4
19.Nxe4 dxe4 20.Bxe8 Rxd2 21.Bxd2 Bg4
22.Rxe4 Bxd1 23.Rxe7 Bxc2 24.b4 Qf6
25.Re3 Qa1+ 26.Be1 cxb4 27.Bb5 f5
28.axb4 f4 29.Re7 Kf8 30.Re8+ Kf7 31.Re2
Qd1 32.f3 Kf6 33.h3 Ba4 34.Ba6 Qa1 35.b5
Qb1 36.Kh2 Bxb5 37.Bc3+ Kg6 38.Bxb5
Qxb5 39.Re7 Qc5 40.Rxg7+ Kh6 41.Bb2
Qc2 42.Be5 Qe2 43.Re7 Kg6 44.Rg7+ Kf5
45.Bc7 ½-½

Sometimes in chess the battle rages over a single square on the board. In this game the f4 square is the main battleground.

MODERN BENONI (A67)

White: Brian Garbera (2167)

Black: Anthony Kain (2036)

2007 Express Tournament

1.d4 Nf6 2.c4 c5 3.d5 e6 4.Nc3 exd5
5.cxd5 d6 6.e4 g6 7.f4 Bg7 8.Bb5+ Nfd7
9.a4 a6 10.Bd3 0-0 11.Nf3 a5 12.0-0
Na6 13.Be3 Nb6 14.h3 Nb4 15.Kh1 Re8
16.Bg1 Bd7 17.Bc2 Nc4 18.Qc1 Qe7
19.Re1 Bh6 20.Bh2 Ne5 21.Nxe5 dxe5
22.Bb1 Ra6 23.Ne2 Rf6 24.Rf1 b6
25.Qd1 exf4 26.Nxf4 Qe5 27.Qc1 c4
28.Ra3 Nd3 29.Bxd3 cxd3 30.Rxd3
Qxe4 31.Qc3 Bg7 32.Rd4 Rxf4 33.Rxf4
Qb1+ 34.Bg1 Re1 35.Rxf7 Rxg1+
36.Kh2 Rh1+ 37.Kg3 Be5+ 38.Kh4 g5+
39.Kxg5 Qg6+ 40.Kh4 Qh6 mate 0-1

Sometimes the three little pigs beat up on the big, bad wolf...

KING'S INDIAN DEFENSE (E70)

White: William Young (2055)

Black: Timothy Harris (2217)

2007 Walter Muir

1.d4 Nf6 2.c4 g6 3.Nc3 Bg7 4.e4 d6 5.h3 0-0
6.Bg5 c5 7.d5 e6 8.Bd3 exd5 9.cxd5 Qb6
10.Nge2 Nbd7 11.Rb1 Re8 12.0-0 c4
13.Be3 cxd3 14.Bxb6 dxe2 15.Qxe2 Nxb6
16.Qd3 Bd7 17.f4 Rec8 18.Rbd1 Nc4
19.Rf2 Rc7 20.Re1 Ne8 21.Nd1 Rac8
22.Rfe2 Nb6 23.e5 Rc5 24.Nc3 Nc7 25.e6
Be8 26.Rc2 Na6 27.Qg3 Na4 28.Rf2 Nxc3
29.bxc3 f5 30.Rb1 Bf6 31.Rc2 b5 32.Qd3
Nc7 33.c4 Nxd5 34.cxb5 Rxc2 35.Qxd5 Re2
36.Kh1 Rcc2 37.a4 Rcd2 38.Qb7 d5 39.Qc8
Kf8 40.Qc5+ Be7 41.Qc3 d4 42.Qc7 h6
43.Rc1 Rxe6 44.Qxa7 Bd6 45.Qh7 h5
46.Qh8+ Ke7 47.Rf1 Re4 48.b6 Rxf4 0-1