



The Check Is in the Mail October 2009

Dan Perry earns SIM Title



Dan Perry has earned his Senior International Master title awarded to him at the ICCF Congress in Leeds, England in September.

Dan was awarded the IM title in 2007. He then made the necessary norms scoring 9-3 in an ICCM Master Norm, winning eight, losing two and drawing two (crosstable follows) event and scoring and undefeated 8-4 (winning four, drawing eight) in a World Championship semifinal. Currently Dan leads the tournament, and may yet finish first, but there are still a number of unfinished games.

Dan is a searcher, a man who works in cooperation with a computer to seek out the best moves. Perfectly legal in ICCF play, called Advanced chess when Kasparov and Topalov played such a match in 1998, the result of this symbiosis is exact, accurate chess.

WS/MN/001		TD Brooks, Dr. Ian S.													SB	Score	R/Place
Category 4 SIM=9 IM=8 LGM=6 LM=3½		1	2	3	4	5	6	7	8	9	10	11	12	13	Score	R/Place	
1	ITA 240317		½	1	1	1	½	1	½	1	1	1	1	1	10	54.75	1
2	DEM 150797	½		1	½	½	1	1	½	½	1	1	1	1	9	48.5	2
3	USA 511677	0	0	½	1	1 ⁰	½	1	1	1	1	1	1	1	9	43	3
4	CZE 130371	0	½	½	0	½	1 ⁰	1	1	1	½	1	1	1	7.5	35.25	4
5	RUS 140620	0	½	0	1	½	½	½	½	½	½	1	1	1	7	32.5	5
6	BRA 70767	½	0	0	½	½	½	1 ⁰	½	½	½	1	1	1	7	32.5	5
7	SLO 480103	½	0	½	½	½	½	½	½	1	½	½	1	1	6.5	31.25	7
8	ITA 240235	0	½	0	0 ⁰	½	½	½	½	½	1	½	1	1	6	26	8
9	BRA 70981	0	½	0	0	½	½	0	½	½	½	1	1	1	5.5	22.5	9
10	SUI 100258	0	½	0	½	½	½	½	0	½	½	½	½	1	5	24.25	10
11	RUS 140146	LM	½	0	0	0	0	0	½	0	½	0	1	1	4	15.25	11
12	JPN 873007		0	0 ⁰	0 ⁰	0 ⁰	0 ⁰	0 ⁰	0 ⁰	0 ⁰	0 ⁰	0 ⁰	½	1	2.75	12	
13	CHI 110084		0	0	0	0	0	0	0	0	0	0	½	0.5	0.5	13	

Here is an example of Dan's play from the World Championship semifinals.

GAME OF THE MONTH

BIRD'S OPENING (A03)

White: Dan Perry (2456)

Black: J. Salcedo Mederos (2453)

32 World Championship SF 2008

**1.f4 d5 2.Nf3 g6 3.g3 Bg7 4.Bg2 Nf6
5.0-0 0-0 6.d3 Qd6 7.Kh1 Rd8**

Salcedo handles the opening in an original fashion and looks to have at least equalized here.

8.Qe1 Nc6 9.e4 dxe4 10.dxe4 Qc5

Black should contest the center here in agreement with his alignment on the d-file by 10...e5

11.Nc3 Qh5

Superficially it looks like Black might have the initiative, but Black's three Queen moves in the opening have squandered his edge.

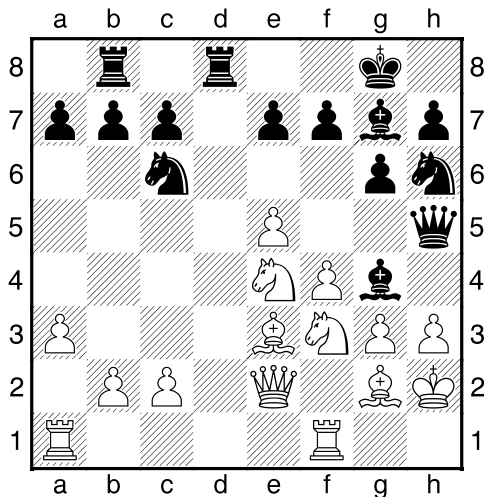
12.e5 Ng4 13.h3 Nh6 14.Kh2 Nb4

Que? It couldn't have been touch move. Perhaps Black was planning on 15. Qe2 c6 16. a3 Nd5 and changed his mind.

15.Qe2 Rb8

15...Bf5 leads nowhere after 16. Ne4, but it would make more sense than 15...Rb8. After this, Perry is in command.

16.a3 Nc6 17.Ne4 Bg4 18.Be3



White now has significant center strength while Black's army lacks cohesion.

18...Nf5 19.c3 Nxe3

On the premise that the worst Bishop is better than the best Knight ? Perhaps, but otherwise Black will have to begin retreating.

20.Qxe3 f6

Brave, but the game has turned against him and Black is still playing for a win.

21.Qc5 Bxf3

White wins after 21...fxe5 22. Qc4+ Kh8 23. Nfg5! threatening smothered mate in four.

22.Bxf3 Qf5 23.Qc4+ Kh8 24.Bg4 Nxe5

Also leading to defeat is 24...Rd4 25. cxd4 Qxe4 26. Rad1 +-

25.fxe5 Qxe5 26.Rae1 b5 27.Qb3 f5 28.Ng5 Rd2+ 29.Kh1 Qf6 30.Nf7+ Kg8 31.Ne5+ Kh8 32.Bf3 c5 33.Rg1

Black has no threats while White has an extra piece. 22. Rg1 will allow Dan to challenge the d2 Rook (Rg2) while keeping his position safe.

33...f4

This allows a neat final Knight dance to win more material, but Black had no realistic chances.

34.Nf7+ Kg8 35.Nd6+ Kh8 36.Ne4 c4 37.Qb4 Qe6 38.Bg2!

Now after 38...Rdd8 the simplest line is just 39. gxf4 maintaining the threat of Ng5 and remaining a piece ahead with a safe King. **1-0**

REINHART CCLA CHAMPION

SM Ken Reinhart scored an undefeated +3 =3 to win the 2006 CCLA Email Championship a half point ahead of Grayling Hill.

A nice attacking game by Reinhart floors Herb Hickman via a Pawn sacrifice. At the end, it will be mate.

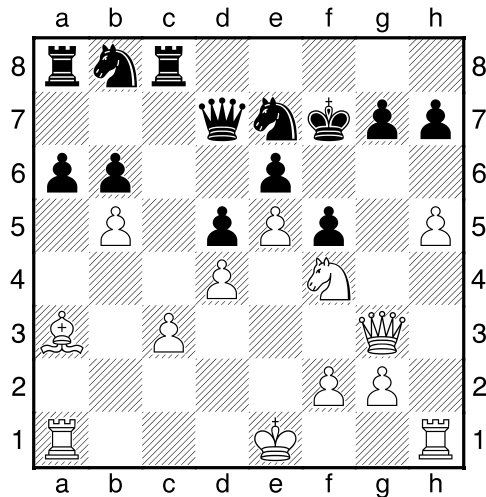
FRENCH DEFENSE (C18)

White: SM Ken Reinhart (2512)

Black: Herb Hickman (2298)

2006 CCLA Email Championship

1.e4 e6 2.d4 d5 3.Nc3 Bb4 4.e5 c5 5.a3 Bxc3+ 6.bxc3 Qc7 7.Qg4 f5 8.Qg3 cxd4 9.cxd4 Ne7 10.c3 0-0 11.Ne2 b6 12.Nf4 Qd7 13.a4 Ba6 14.Bb5 Bxb5 15.axb5 Kf7 16.Ba3 Rc8 17.h4 a6 18.h5



18 ...axb5 19.h6 g6 20.Qg5 Qc7 21.Qf6+ Ke8 22.0-0 Nbc6 23.Nxe6 Qb7 24.Nc7+ 1-0

SEPTEMBER RESULTS

WALTER MUIR

James Sawaski	09W12	5-1
Joseph Hawkins	09W13	5-1
Sandip Chattopadhyay	09W13	5-1
Patrick Walsh	09W16	5 ½-½
Mark Does	09W11	5-1
Timothy Sniffin	09W11	5-1

JOHN COLLINS

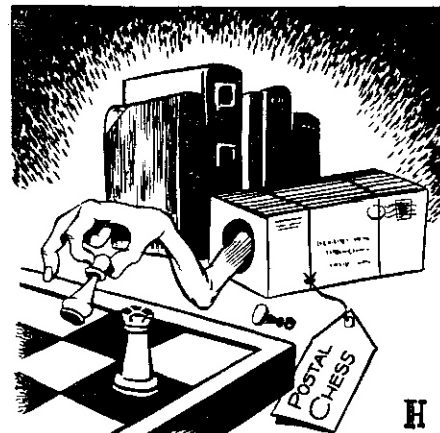
Roger Buehl	08C18	6-0
Thomas Babcock	08C19	4 ½ -1 ½
Harry De Witt	08C07	4-2
Kevin Dunn	07C15	4-2

EXPRESS TOURNAMENT

Andrew Bussom	08ET05	5-1
---------------	--------	-----

SWIFT QUAD

Connor Izard	08SQ09	5-1
Jeffrey Jones	09SQ04	6-0



The teleporter – Chess Review 1954

CLASSIFIED ADS

LEARN CHESS BY MAIL ! Lessons given by mail, telephone, ICC – many different ways. I specialize in players rated 800-2100 who would like to improve their game. Contact me for information. Alex Dunne, 324 West Lockhart St., Sayre, PA 18840 or chesskinetics@stny.rr.com

Quote: In addition to the allurements common to all chess, correspondence chess has five values in its own right; it is chatty; it encourages reading, collateral to the game while in progress; it is likely to be accurate chess within one's limitations, unimpaired by the excitements of face-to-face play; it does not absorb two men's time while one man lucubrates; and finally, it gears into life as a servant of our leisure, filling the chinks of time, between chores with enjoyable detachment -- W. E. Napier

BABCOCK TAKES FIRST

Thomas Babcock was the only undefeated player in John Collins 08C19 and by virtue of that took first place in this Expert/Master tournament.

Babcock	2081		11	==	1=	4½
Dalthorp	2383	00		1=	11	3½
Angres	2042	==	0=		11	3½
Truax	2202	Q=	QQ	QQ		½

Wisdom seldom comes without pain. Dan Dalthorp sent in this game against Thomas Babcock noting the following lesson concerning Move 35 – “Lesson: Even when it looks easy, resist the temptation to quickly write down your move and heed your wife's call of: ‘Come on ! We're going to be late. Let's go!’ Instead, put the postcard and pen down and return to the game later.”

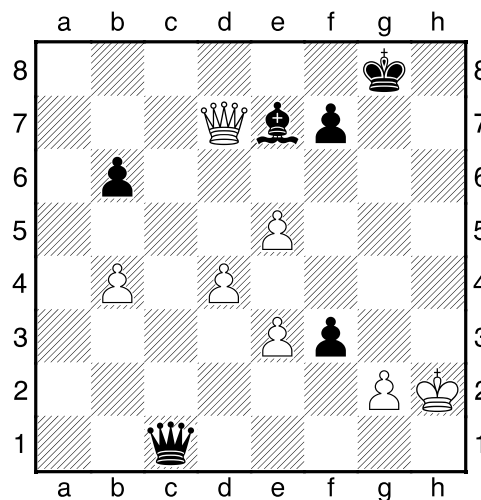
FRENCH DEFENSE (C02)

White: Dan Dalthorp (2383)

Black: Thomas Babcock (2081)

08C07 2008

1.e4 e6 2.d4 d5 3.e5 c5 4.c3 Nc6 5.Nf3 Qb6 6.a3 Bd7 7.b4 cxd4 8.cxd4 Rc8 9.Be3 Nh6 10.Bd3 Ng4 11.0-0 Be7 12.Nbd2 Nxe3 13.fxe3 a6 14.Nb3 Na7 15.Nc5 Bb5 16.Rc1 h6 17.Rf2 Bxd3 18.Qxd3 Qb5 19.Qb1 0-0 20.a4 Qc6 21.Rfc2 b6 22.Nxa6 Qxa4 23.Nc7 Qd7 24.Qa2 Nb5 25.Qa4 Rfd8 26.Nxd5 exd5 27.Rxc8 Rxc8 28.Rxc8+ Qxc8 29.Qxb5 g5 30.h3 h5 31.Qxd5 g4 32.hxg4 Qc1+ 33.Kh2 hxg4 34.Qd7 gxf3



35.Qe8+ Bf8 36.e6 Qc7+ 37.Kg1 fxe2 38.b5 Qc1+ 39.Kxg2 Qc2+ 40.Kf3 Qf5+ 41.Ke2 Qxe6 42.Qc6 Qxc6 43.bxc6 Bd6 44.e4 Kf8 45.Kd3 Ke7 0-1

WEB WALKING

A web page that is of interest to correspondence chess players is Alex Herrera's Website. Alex is a CC Master (he has qualified for the 18th USCCC Final) and has a site that includes a number of his best games. Here is a taste of one against the redoubtable John Burton. You can find Alex at <http://members.cox.net/alex.herrera/corr/corr.htm>

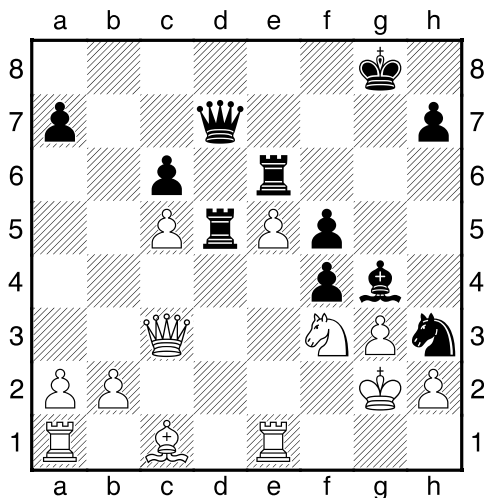
PETROFF DEFENSE (C42)

White: John Burton (2404)

Black: Alex Herrera (2059)

1999 Golden Knight Semifinal

1.e4 e5 2.Nf3 Nf6 3.Nxe5 d6 4.Nf3 Nxe4 5.d4 d5 6.Bd3 Nc6 7.0-0 Be7 8.Re1 Bg4 9.c3 f5 10.Qb3 0-0 11.Nbd2 Na5 12.Qa4 Nc6 13.Bb5 Bh4 14.g3 Bf6 15.Bxc6 bxc6 16.Qxc6 Re8 17.Ne5 Bxe5 18.dxe5 Ng5 19.c4 d4 20.f4 Re6 21.Qd5 Nh3+ 22.Kg2 Qe8 23.Qb5 c6 24.Qa4 g5 25.c5 gxf4 26.Qxd4 Rd8 27.Qc3 Rd5 28.Nf3 Qd7 0-1



Alex's notes illustrate the depths of White's problems after 29. Rf1 Rdx5 30. Nxe5 Qd5+ 31. Nf3 Re2+ 32. Kh1 Ng5 winning

Unrated doesn't mean unskilled. In this game, Tom Morell demonstrates that at 0000, he is definitely under-rated.

QUEEN'S INDIAN DEFENSE (E17)

White: Tom Morrell (0000)

Black: Kevin Taylor (0000)

Lightning Match 2009

1.Nf3 Nf6 2.g3 b6 3.Bg2 Bb7 4.0-0 e6 5.c4 Be7 6.d4 0-0 7.Re1 Ne4 8.Nfd2 d5 9.Nxe4 dxe4 10.Nc3 f5 11.d5 Nd7 12.Qc2 exd5 13.Nxd5 Bxd5 14.cxd5 Nf6 15.Rd1 Bc5 16.h3 Nxd5 17.b4 Qf6 18.Bb2 Nxb4 19.Qb3+ Qf7 20.Rd7 Qxb3 21.Rxg7+ Kh8 22.axb3 Nd5 23.Rg6+ 1-0

The value of the center even in the late middlegame is illustrated in this win by Lester Weiss.

KING'S INDIAN DEFENSE (E66)

White: G. Williamson (1564)

Black: Lester Weiss (2156)

2008 Electronic Knights semifinal

1.c4 Nf6 2.Nf3 g6 3.g3 Bg7 4.d4 0-0 5.Bg2 d6 6.0-0 Nc6 7.Nc3 a6 8.d5 Na5 9.Nd2 c5 10.Qc2 Rb8 11.b3 b5 12.Bb2 e5 13.dxe6 fxe6 14.cxb5 axb5 15.Nce4 Nxe4 16.Nxe4 Bxb2 17.Qxb2 Bb7 18.Rfd1 Bxe4 19.Bxe4 d5 20.Bg2 Qb6 21.e3 Rf7 22.h4 Rbf8 23.Bh3 Rxf2 24.Qxf2 Rxf2 25.Kxf2 Kg7 26.Ke2 c4 27.bxc4 Nxc4 28.Rd3 Qd6 29.Rg1 Qe5 30.Rb3 Qe4 31.Rd3 Ne5 0-1

After White sacrifices a Pawn on move 14 it seems a curtain is pulled over Black's position until it is removed at move 35 when Black is down a Pawn.

SEMISLAV DEFENSE (D30)

White: Wesley Brandhorst (2453)

Black: Richard Title (2443)

2005 Absolute

1.d4 d5 2.c4 c6 3.Nf3 e6 4.e3 Nf6
5.Bd3 Nbd7 6.0-0 dxc4 7.Bxc4 b5
8.Bd3 a6 9.a4 b4 10.e4 c5 11.e5 Nd5
12.Bg5 Be7 13.Bxe7 Qxe7 14.Nbd2
cxd4 15.Rc1 0-0 16.Nc4 f6 17.exf6
Qxf6 18.Re1 Nc5 19.Bb1 Bd7 20.Nce5
Bxa4 21.Qxd4 Nd7 22.Qe4 Qh6 23.Nd3
Bb5 24.h4 Bxd3 25.Bxd3 Nf4 26.Bf1 a5
27.g3 Qg6 28.Ng5 Qxe4 29.Rxe4 h6
30.gxf4 hxg5 31.fxg5 Rac8 32.Rxc8
Rxc8 33.Rxe6 a4 34.Ra6 a3 35.bxa3 b3
36.Ra5 Rb8 37.Bd3 Kf7 38.h5 b2
39.Bb1 Rc8 40.Ba2+ Ke7 41.Rb5 1-0

DULIBA ANNOTATES

DUTCH DEFENSE (A93)

White: Edward Duliba (2552)

Black: Corky Schakel (2391)

2007 Absolute

1.d4 e6 2.c4 f5 3.g3 Nf6 4.Bg2 Be7
5.Nf3 0-0 6.0-0 d5 7.b3 Bd7

An interesting idea that doesn't quite pan out in this game. Schakel immediately plays to activate the problem Bishop of the stonewall with the plan Bd7-e8-h5 but it never reaches its assigned destination.

8.Nc3 Ne4 9.Bb2 Be8 10.Ne5 Nxc3

With the investment of two Bishop moves to move the Bishop from c8 to e8, Black has to avoid trying to establish as Stonewall by 10...c6 as 11. Nxe4 fxe4

12. f3 opens up the game favorably for White.

11.Bxc3 c6 12.Qd2 Nd7 13.Ba5 Qb8 14.Nd3

White will reposition this Knight later, avoiding its exchange for the more passive Black Knight.

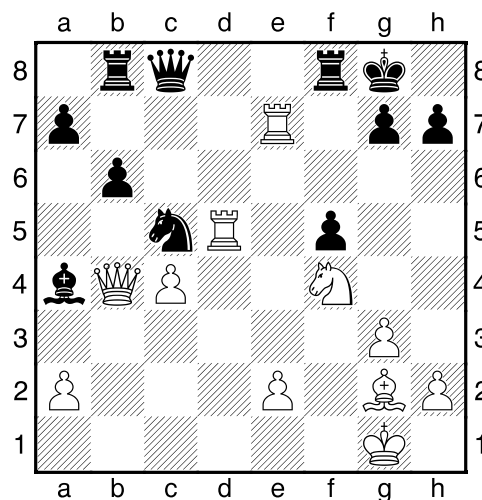
14...dxc4 15.bxc4 e5 16.Bb4 Bxb4 17.Qxb4 e4

Black has a difficult game after 17...exd4 18. Rab1 Rf7 19. Qxb7 Qxb7 20. Rxb7 Nb6 21. Rxf7 Bxf7 22. c5 Nd5 23. Ne5, but that might have been the better way.

18.Nf4 c5 19.dxc5 Qc8 20.Rad1 Nxc5 21.f3

White's better development allows him to open up the position favorably.

21...exf3 22.Rxf3 Ba4 23.Rd5 b6 24.Re3 Rb8 25.Re7



I thought that Schakel's resignation was slightly premature, but then I have the enjoyable side of this position. Black's scattered pieces offer little hope for survival. 1-0